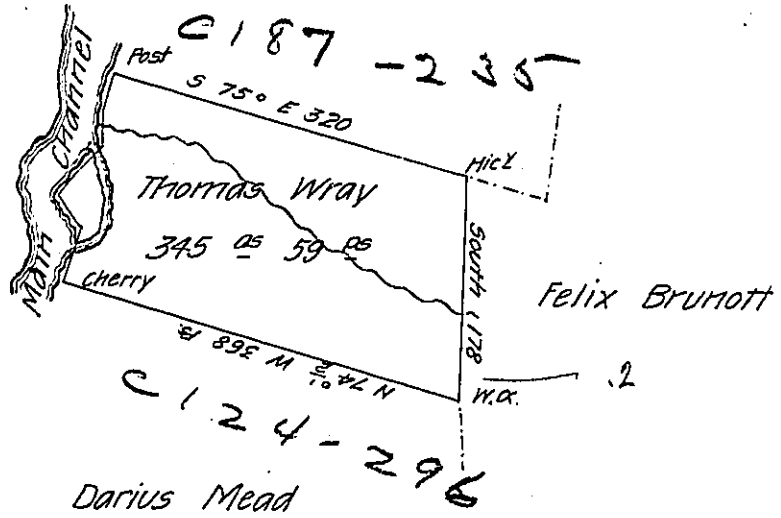


FORM No. 1.

Courses and distances up French
Creek beg^d at a Cherry Tree

N 27° 1/4 E 26
 N 2° E 21
 N 35° W 28
 N 46° E 65
 N 4° W 26
 N 8° E 25
 Total 191

William Jones



In Pursuance of a Warrant for 345 acres 59 perches dated the 30th day of November 1801 was Surveyed September the 22^d 1802 for Thomas Wray the above described tract of land containing 345 acres 59 perches and allowance of six per Cent for Roads &c. Situate on the East side of French Creek in Mead township Crawford County

William McArthur D.S.

To Samuel Cochran Esquire
Surveyor General

IN TESTIMONY that the above is a copy of the original remaining on file in the Department of Internal Affairs of Pennsylvania, made conformably to an Act of Assembly approved the 16th day of February 1833, I have hereunto set my hand and caused the Seal of said Department to be affixed at Harrisburg, this twenty third day of May 1907

Henry Howell
Secretary of Internal Affairs.